

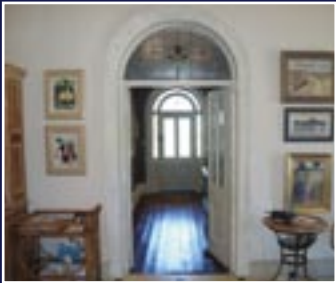


*Property presented by*  
luxury lifestyle group  
**llg**

**Waverley Estate Port Elliot**  
58 Waterport Rd Port Elliot SA 5212  
Mobile: 0407 604 337 Fax: 08 8342 0114  
Email: [info@waverleyestate.com](mailto:info@waverleyestate.com)  
Web: [www.waverleyestate.com](http://www.waverleyestate.com)

*WE*

**WAVERLEY ESTATE**  
PORT ELLIOT





Waverley Estate is beautifully located just one hour south of Adelaide, on the spectacular Fleurieu Peninsula at Port Elliot, one of the most charming seaside towns in South Australia, and minutes from Horseshoe Bay, its loveliest beach.

Relax and enjoy Waverley Estate's well appointed accommodation and lifestyle facilities, beautifully decorated with a distinctive French provincial elegance. The Estate is available year round for all types of accommodation and function requirements including: weddings, birthdays, family holidays, reunions, romantic getaways, day spas, business conferences, cooking classes, language retreats or any other event.

Nestled amongst towering gums, olives and petit verdot vines on four acres of spacious grounds, this unique property dates back to 1856. Waverley Estate offers 4.5 Star accommodation with five semi self-contained guest rooms including ensuites, plus the main bluestone house comprising two bedrooms, fully equipped kitchen, lounge, dining, open fire and r/c airconditioning.



## ACCOMMODATION available for 2 - 19

- **1856 Bluestone House** sleeps 4 [2 queensize bedrooms, 2 bathrooms]
- **Stable** sleeps 2 [1 queensize bed, ensuite]
- **Loft** sleeps 2 [1 queensize bed, ensuite]
- **Isabella Room** sleeps 2 [1 queensize bed, ensuite]
- **The Villa** sleeps 3 [1 queensize bed, 1 single, ensuite]
- **School House** sleeps 6 [1 queensize bed, 4 singles, ensuite]

## LIFESTYLE FACILITIES

- Solar Heated Swimming Pool
- Lawn Tennis Court
- Petanque Lawns
- Central Courtyard with Fire Pit
- BBQ and Picnic Areas
- Alfresco Dining

